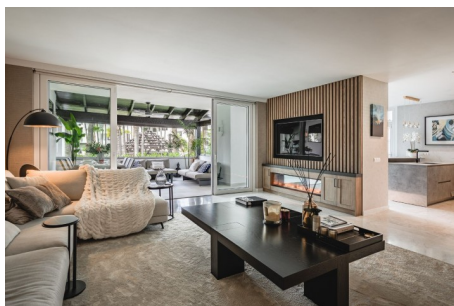


Japanese Gardens, Marina Puente Romano - Southwest-Facing Apartment

€5,495,000

3 Bed • 3 Bath • 198 m² Built • 47 m² Terraces • 0 m² Plot





DESCRIPTION

Fully renovated southwest-facing apartment in Japanese Gardens, Marina Puente Romano.

This elevated luxury apartment, all in one level, comprises: entrance hall; living/dining room with access to a partly covered terrace, overlooking the mature gardens and swimming pool; contemporary open-plan kitchen with centre island and access to the terrace; en-suite master bedroom; 2 additional bedrooms with 2 bathrooms, one of them en-suite. It includes a parking space and storage in the underground level.

A truly unique and rare property on the market in quite possibly the most demanded residential complex on the Coast.