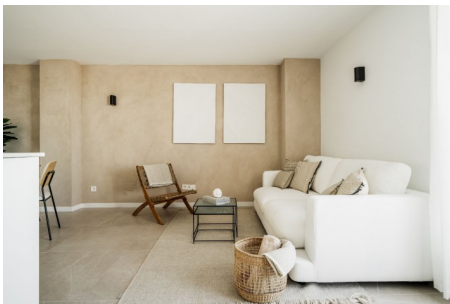


## Stylish Scandinavian-inspired Penthouse Walking Distance to Puerto Ban...

€650,000

2 Bed • 2 Bath • 113 m<sup>2</sup> Built • 0 m<sup>2</sup> Terraces • 0 m<sup>2</sup> Plot





## DESCRIPTION

This stylish Scandinavian-inspired residence offers an open and spacious living area, creating a relaxed and inviting atmosphere. Step onto your private terrace, a tranquil retreat to unwind and enjoy the surroundings.

In this penthouse, you are only a few minutes away from the beach, amenities, and the iconic Puerto Banús, making it an ideal choice for a convenient and comfortable holiday home. With its appealing features and location, this property is also a good rental investment with a high ROI%. Experience the essence of Marbella living in this charming penthouse.

[Read more online...](#)